

Insects are the largest and most important group of animals on Earth. There may be as many as 10 million different species alive today!

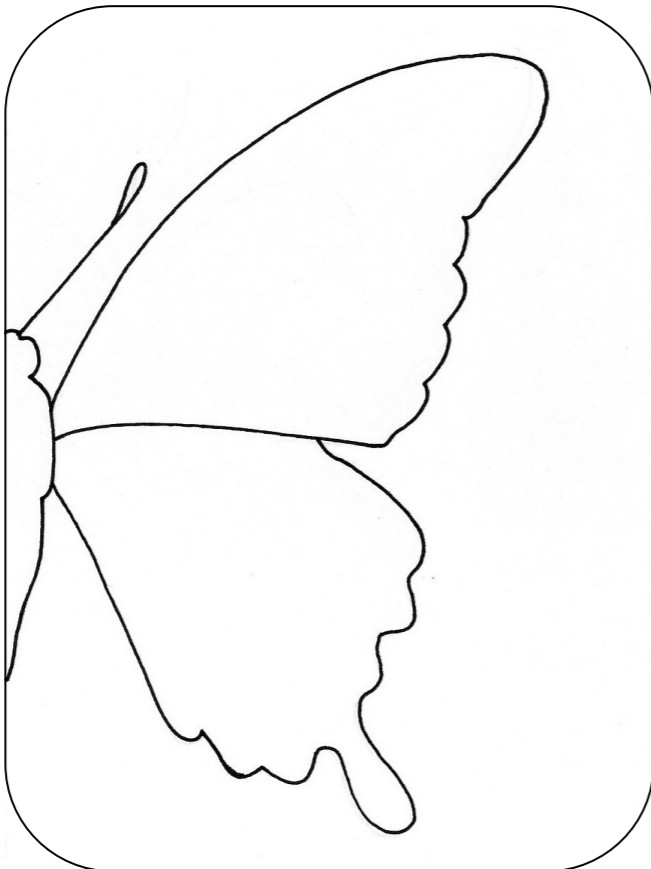
Name: \_\_\_\_\_

## 1 Flutter and Flap



**Climb** the stairs near the shop and **pass** the beehive room. Now **turn right along the corridor** to find the bug displays.

**Look** at the beautiful butterflies and moths. **Draw** the pattern of your favourite butterfly or moth wing here:



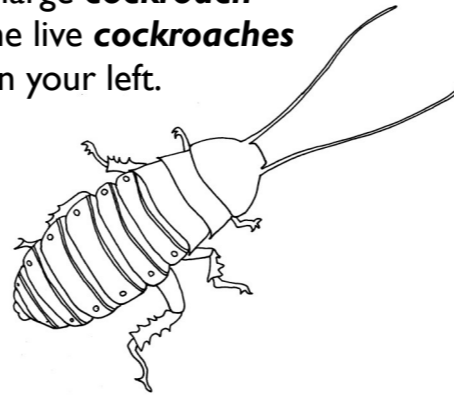
Can you **find** one that is your favourite colour?

What do all of them have in common?

.....  
.....

## 2 Radical 'Roaches

**Look** at the large **cockroach** model and the live **cockroaches** in the tank on your left.



Why do you **think** they have such hairy, prickly legs.

What do they eat?  
**Look** inside the tank for clues!

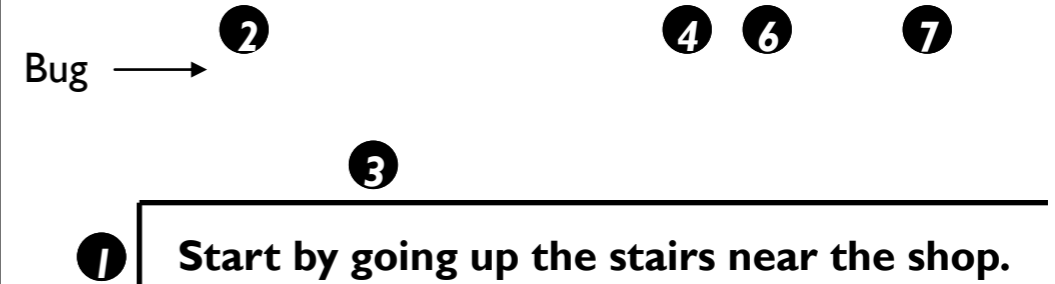
Why do you **think** **cockroaches** are so important for planet Earth?

### Did you know...

... 75% of all animals in the world are insects?

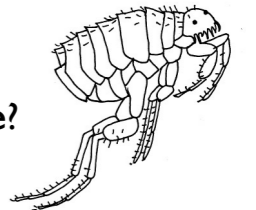


## Museum Map



## 3 Fantastic Fleas

Look at the **fleas** display. Are these facts **true** or **false**? **Tick** the box.



- The **plague flea** can jump 20cms higher than the **human flea**.

**T**  **F**



- Male **fleas** consume more blood than female **fleas**.

**T**  **F**



- It takes a **flea** up to 10 minutes to finish their meal of blood.

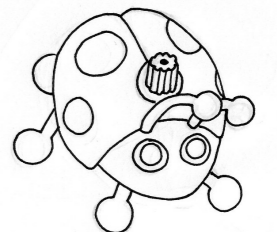
**T**  **F**



## 4 Bug Play Time

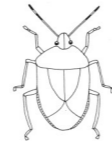
**Find** the collection of bug toys in the low cabinets on your left.

**Discuss** with a friend. Which do you like most? Why? Have you ever had a toy like any of these?



**Did you know...**

... there are over 370,000 different species of beetle in the world?



**5 Investigate Insects**

Although there are as many as 10 million different species of insect, they all have some things in common.



Tick the correct boxes.

All insects...

- ...have 6 legs
- ...live on land
- ...can fly
- ...have 3 main body parts
- ...have jointed legs
- ... eat plants
- ... have a hard body
- ... have yellow eyes

Can you find any insects that break your rules?

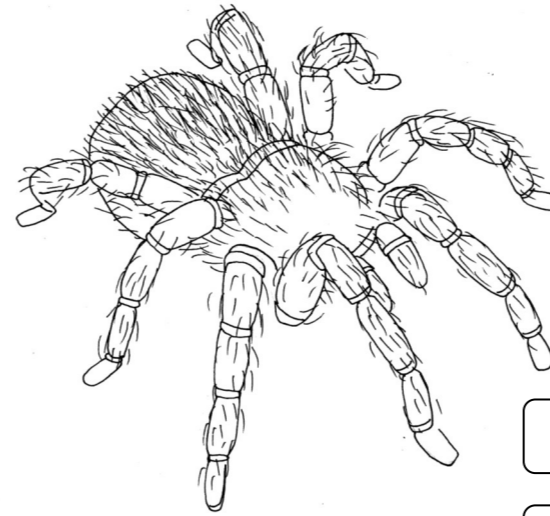
Find a bug that is not an insect.

**6 Awesome Arachnid**

Can you find the live tarantula in the tank?

This spider has lots of special features that make it an excellent predator and a great defender.

Match the body features to their purpose.



Large fangs

Feel vibrations from prey on the ground.

Hairy body

Looking out for predators

Eyes on top of the head

Crush prey

Can you label these features on the picture?

**6 Forest Forage**

Find the forest floor, in the Camouflage and Mimicry display.

How many insects can you find?

Which is the easiest to spot?

Which is the hardest?

Discuss with a friend why you think this is.



**Don't forget to...**

... have a good look at the live bugs as you explore the Museum. Can you find...  
... a giant millipede? ... a mantis? ... the live bee hive?

**8 Star Bug!**

Choose the best bug you've seen in the museum today.

Draw your star bug in the box.

Look carefully at its special features.

Discuss with a friend: why should it become star bug of the week?

What makes your bug so special?

This bug is nominated for star bug of the week because...



.....  
.....  
.....

