

Name:

1 Befuddling Feathers

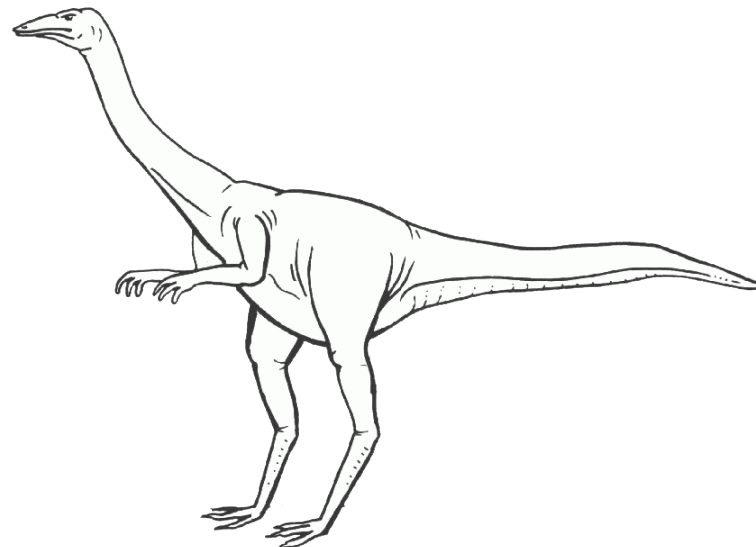
Find the skeleton of **Struthiomimus** (strooth-ee-oh-my-mus).

The name *Struthiomimus* means 'Ostrich mimic'.

List 3 features *Struthiomimus* has that look similar to an Ostrich.

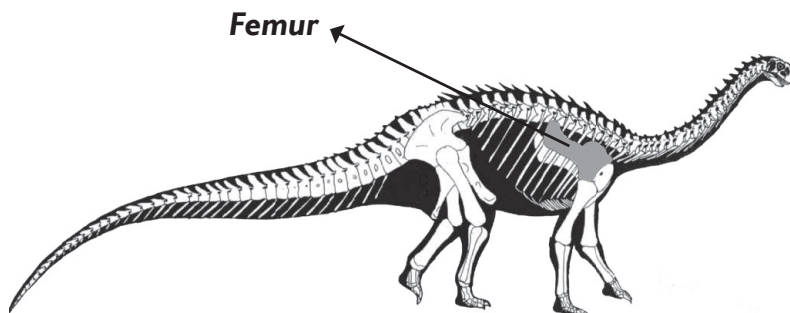
- 1 -----
- 2 -----
- 3 -----

Scientists now think *Struthiomimus* was covered in feathers
- just like an Ostrich.



Draw feathers on this *Struthiomimus*.

2 Super Sauropods



Find the case about **Cetiosaurus** (seet-ee-oh-saw-rus).

Cetiosaurus was a huge herbivore that used to roam Oxford.

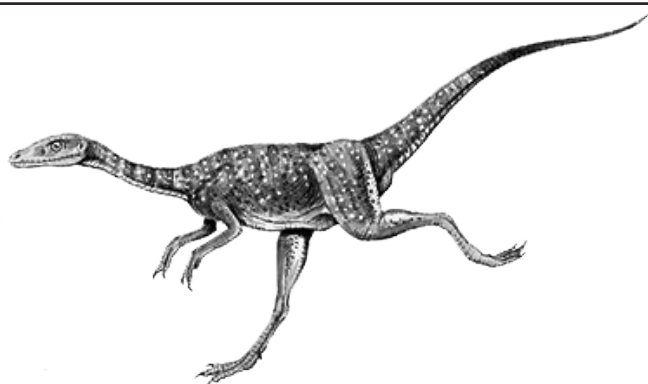
Look at its femur (thigh bone) in the case and **measure** yourself against it.

Draw how big you would be standing next to a *Cetiosaurus*.

3 Diddy Dinos

Not all dinosaurs are big.

Compsognathus (Comp-sog-nay-thus) was a very small dinosaur.



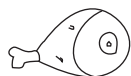
Look at the model of *Compsognathus*.

Discuss with a friend and circle below which words you think describe *Compsognathus* best.

Fast

Graceful

Meat-Eater



Plant-Eater



SLOW

Clumsy

4 Dino Dentist

Some dinosaurs had teeth that were good for eating meat. Some dinosaurs had teeth that were good for eating plants.

Match the teeth up with the food.



Find dinosaurs in the museum with each of these teeth.

Did you know...

Plant-eating dinosaurs are called **herbivores**, and meat-eating dinosaurs are called **carnivores**.

5 Star Dino!

Which dinosaur has been your favourite today?

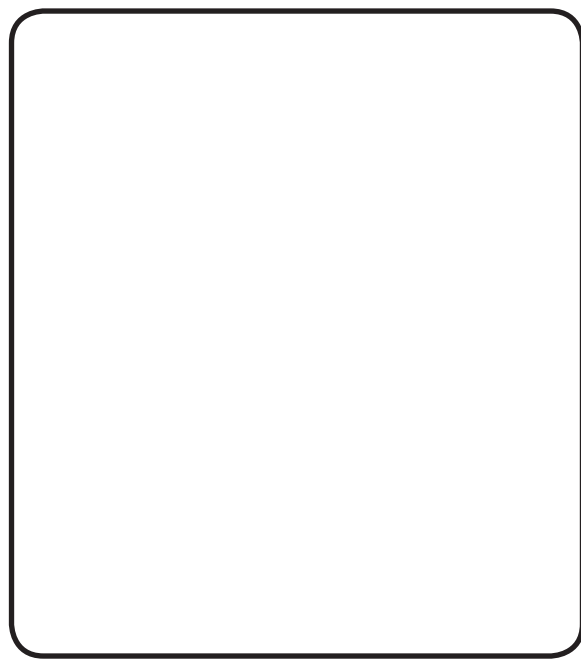
Draw your star dinosaur in the box.

Give three reasons why you like this dinosaur...

1 _____

2 _____

3 _____



Museum Map

